

Learning Environments user guide: Using a dual boot iMac

Using an iMac

An iMac differs from a regular desktop computer. It has a:

- Slot-loading CD/DVD drive on the right-hand side of the computer.
- Power button located on back of computer.
- Dual boot configuration – running both Windows and Mac OS X.



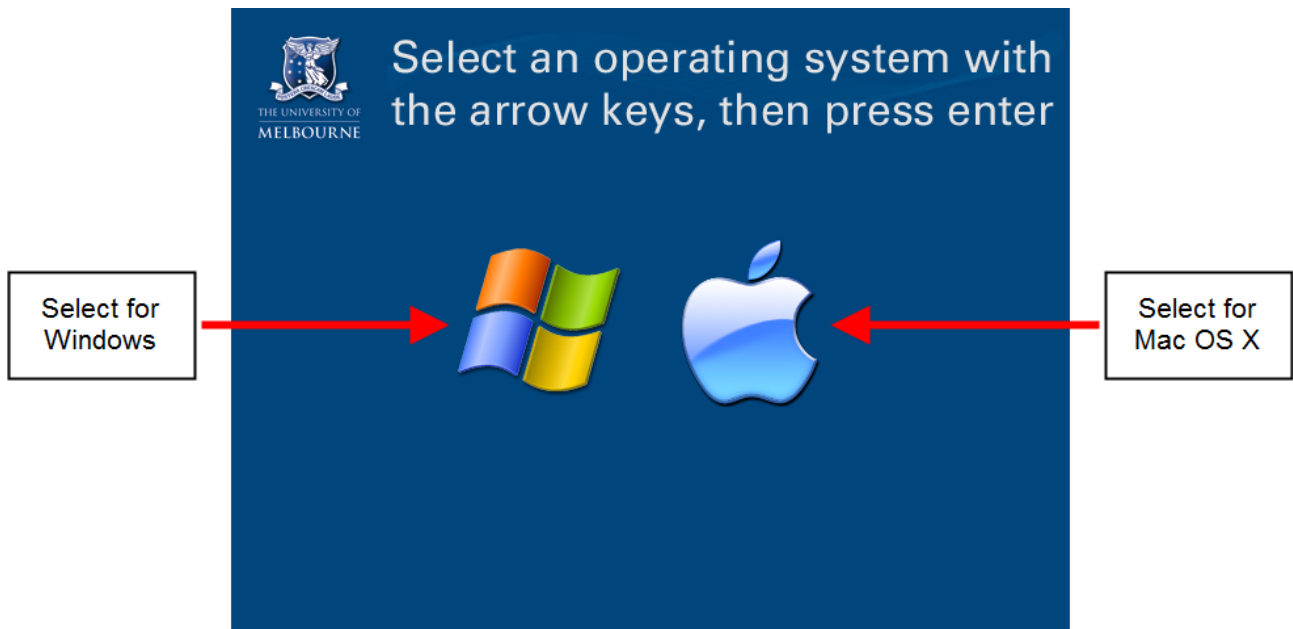
Turning on an iMac

The power button for an iMac is located on the back of computer - press the power button once to turn on the iMac.

Windows or OS X?

Using the arrow keys on the keyboard, select an operating system – Windows or Mac OS X – then press Enter or Return.

The computer will start up using the selected operating system.



Ejecting a CD or DVD



Location of eject key on an Apple keyboard

The eject key for the CD/DVD drive on an iMac is located on the keyboard (see above):

- Load your CD/DVD by inserting it into the CD/DVD slot.
- Eject your CD/DVD by pressing the eject key – there is a short delay between pressing the eject button and the disc ejecting.

Typing PC key commands on an Apple keyboard

PC key command	Apple external keyboard
Control-Alt-Delete	control-option-delete ⌘ ¹
Alt	alt option
Backspace	delete
Delete	delete ⌘ ¹
Enter	return
Enter (numeric keypad)	enter
Insert	fn-enter
Num lock	clear
Pause/Break	F16
Print Screen	F14
Scroll/Lock	F15
Windows	command

¹ Use the Delete key above the arrow keys.

Report any errors or omissions in this user guide to:

les-guides@unimelb.edu.au